

## QUICK RELEASE COUPLING QR-03 ASSEMBLY INSTRUCTION



## CONTENTS

1. General Terms
2. Components
3. Connector Assembly
4. Mounting/ Welding Advice
5. Tightening Torque
5. Service
6. Connector Datasheet

# 1. GENERAL TERMS

The following information gives an instructive view on how to handle the Quick Release Coupling QR-03 and the assembly process.

The specified regulations have to be obeyed all time to ensure a proper performance of the equipment.

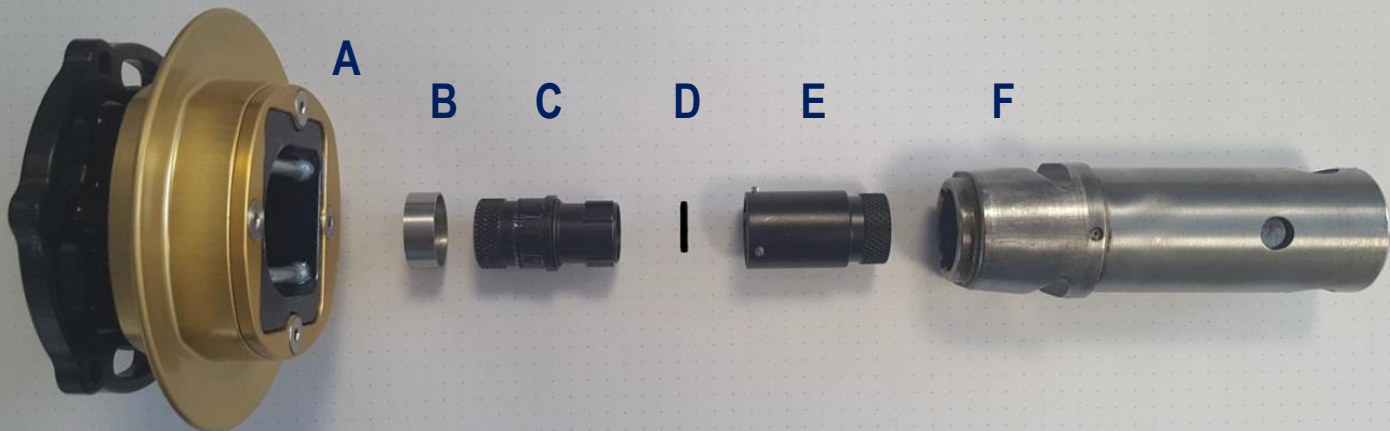
Krontec GmbH accepts no liability for any damage caused by improper handling whilst working with the QR steering wheel system system.



## 2. COMPONENTS

Components, which are required for the installation of the connector:

- A Quick release coupling steering wheel QR- 03
- B Spacer
- C Plug QR-03-ST22 PN-MOD
- D O-Ring 12x1 mm
- E Plug QR-03-ST22 SN-MOD
- F QR-31 (Weld boss)



### 3. CONNECTOR ASSEMBLY

**1** Push the spacer onto the plug QR-03-ST22 PN-MOD up to its stop.

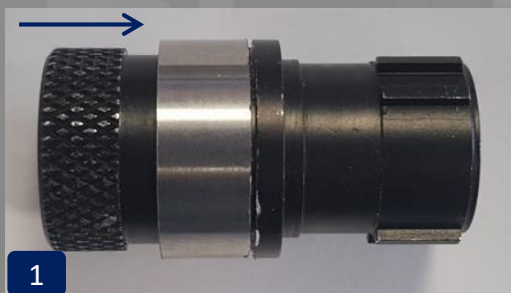
**2** Mount the O-Ring 12x1mm onto the plug QR-03-ST22-PN MOD.

The O-Ring ensures the clearance that is necessary between the components, so the plug will sit 100% correctly.

After the assembly is completed, the O-Ring can be removed from the plug again!

**3** Insert the plug QR-03-ST-22-PN MOD into the plug QR-03-ST22-SN MOD.

**4** Insert a grub screw M3x6mm into the weld boss QR-33. Just screw in the first two pitches of the thread.





### 3. CONNECTOR ASSEMBLY

**5** Push the plug QR-03-ST22-SN MOD up against block into the male counterpart.

**6** The slot of the connector should aim onto the flat face of the QR-detail!

Tighten the grub screw (hand tight), that get inserted during step 4.

Focus on the Orientation of the connectors slot.

**7** Insert the plug QR-03-ST-22-PN MOD into the plug QR-03-ST22-SN MOD.

**8** Push the female part QR-03 onto the assembly.



### 3. CONNECTOR ASSEMBLY

**9** Mount the assembly into a vice, as shown in the images below.

This should be decided depending on the existing operating conditions!

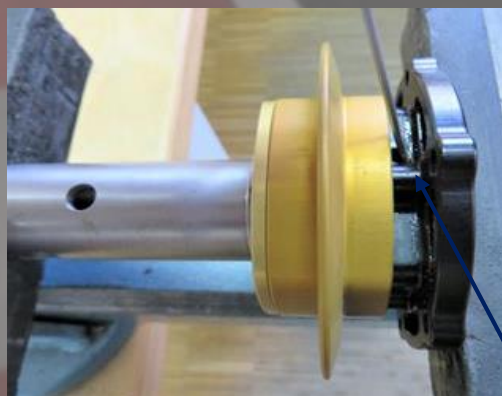
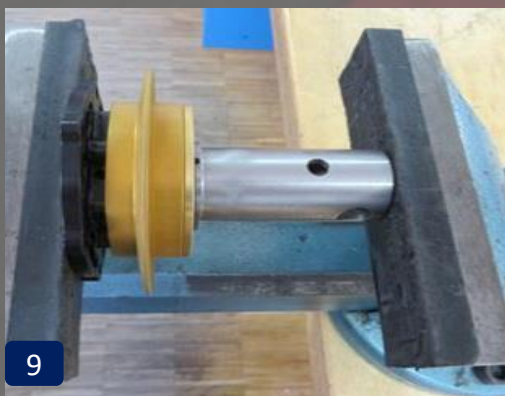
To fix the position of the plug, insert a grub screw M3x6mm to the thread. Make sure to tighten the assembly firmly!

**10** Remove the assembly from the vice again. Female and Male part can now be disconnected.

Additional information:

If necessary, the plug can be glued into the coupling with use of an appropriate instant- or multi-part adhesive.

**11** Remove the O-Ring 12x1mm that got inserted from the plug QR-03-ST22-PN MOD again.



Grub  
screw



## 4. MOUNTING/WELDING ADVICE



Only Use Krontec Spacers on the steering wheel side of the QR

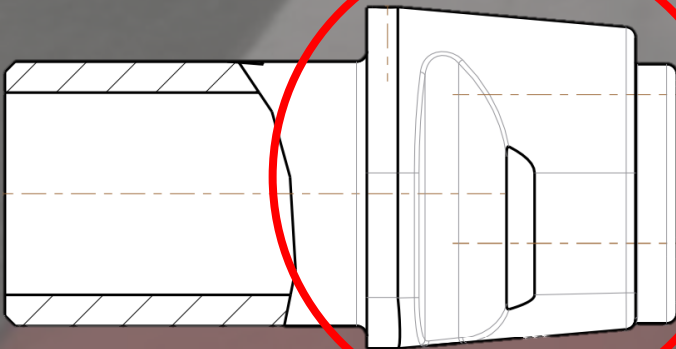
Spacers are available with 20mm, 40mm and 60mm

→ Other designs are not recommended and might cause a safety risk



When using weld-on adapters, please make sure that the process will not have any impact on the QR detail.

Therefore please keep an eye on the heat affected zone. Damaging the QR detail and its surface might result in a poor performance of the system.





## 5. TIGHTENING TORQUE

The plugs are now successfully mounted and the QR-03 is ready to use.



Recommended tightening torque  
12x M5 Bolts: 4 – 5 Nm

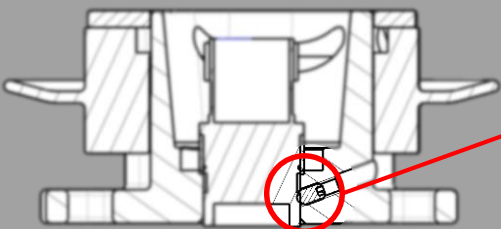
## 6. SERVICE

### Service:

After every race:

After 5.000km/ Half season/ Upon need:

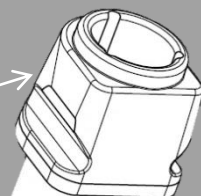
- Slightly grease coupling with silicone grease or PTFE spray
- Clean coupling and grease as mentioned above
- Check if connector bolt sits tight, retighten if needed



Use Allen Key Size 2 to tighten  
connector bolt

You can use a 2<sup>nd</sup> bolt to secure  
the first one installed

Grease!



## 7. CONNECTOR DATASHEET

### Connector Datasheet (page 21-23):

QR-30-22P uses QR-03-ST22\_PN-Mod = **AS 6 12 – 35 P N**

QR-33-22P uses QR-03-ST22\_SN-Mod = **AS 1 12 – 35 S N**

[Technical Manual](#)



**KRONTEC GmbH**

Walhallastraße 19 • 93083 Obertraubling • Germany • Tel.: +49-(0)9401-52 53-0 • Fax: +49-(0)9401-52 53-10

[www.krontec.de](http://www.krontec.de)