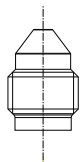


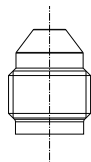
Fitting Größe JIC Size	Gewinde Thread	Edelstahl / Titan Stainless Steel / Titanium		Aluminium	
		min	max	min	max
-3	3/8-24-UNF	11	16	8	12
-4	7/16-20-UNF	15	21	11	16
-6	9/16-18-UNF	24	32	17	22
-8	3/4-16-UNF	53	62	31	39
-10	7/8-14-UNF	70	84	41	48
-12	1-1/16-12-UNF	97	119	52	62
-16	1-5/16-12-UNF	129	155	79	95

Fitting Größe JIC Size	Gewinde Thread	Edelstahl / Titan Stainless Steel / Titanium		Aluminium	
		min	max	min	max
-3	M 10x1	11	16	8	12
-4	M 12x1,5	15	21	11	16
-6	M14x1,5	24	32	17	22
-6	M16x1,5	38	47	24	30
-8	M18x1,5	53	62	31	39
-10	M22x1,5	70	84	41	48
-12	M26x1,5	97	119	52	62
-16	M30x1,5	129	155	79	95

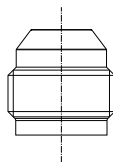
**Dash (JIC 37°)**



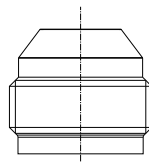
**Dash 03**



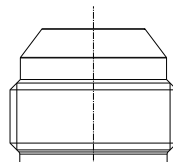
**Dash 04**



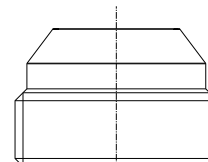
**Dash 06**



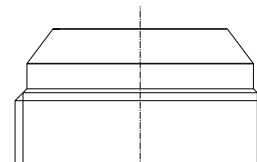
**Dash 08**



**Dash 10**



**Dash 12**



**Dash 16**

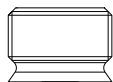
**Metrische / Metric**



**M 10x1,5**



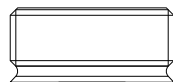
**M 12x1,5**



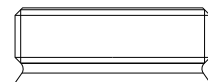
**M 14x1,5**



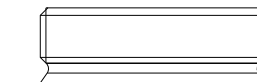
**M 18x1,5**



**M 22x1,5**



**M 26x1,5**



**M 30x1,5**

**Maßstab 1:1 / Scale 1:1**