

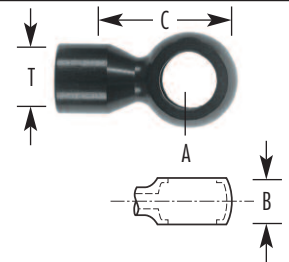
Bremsleitungs - System ¹
Rohrsystem für Bremsleitung
nach DIN 74234 (ISO 4038)

Brake pipe System ¹
Brakepipes according to
DIN 74234 (ISO 4038)

Part No.	Thread "T"	Bördel	A Dia [mm]	B [mm]	C [mm]	Hohlschraube Banjo Bolt
----------	------------	--------	------------	--------	--------	-------------------------

Ringstück Aluminium / Banjo Aluminium
Gewindeloch DIN 74235 Form FL (Bördel F) / Threadhole DIN 74235 Form FL (Flare F)

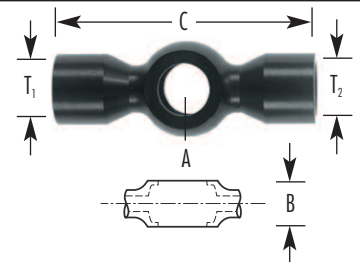
776-10d-10x1	M 10x1	F	10,0	11,3	26,5	775-3/8-24/10x1(,25)
776-11d-10x1	M 10x1	F	11,0	11,3	26,9	775-7/16-20
776-12d-10x1	M 10x1	F	12,0	12,1	27,5	775-12x1(,5)



Part No.	Thread "T ₁ "	Thread "T ₂ "	Bördel	A Dia [mm]	B [mm]	C [mm]	Hohlschraube Banjo Bolt
----------	--------------------------	--------------------------	--------	------------	--------	--------	-------------------------

Doppelringstück Aluminium / Double banjo Aluminium
Gewindeloch DIN 74235 Form FL (Bördel F)/Threadhole DIN 74235 Form FL (Flare F)

779-10d-10x1	M 10x1	M 10x1	F	10,0	11,3	50,6	775-3/8-24/10x1(,25)
--------------	--------	--------	---	------	------	------	----------------------



¹ Alle Gewindelöcher M 10x1 nach DIN 74235 Form FL (Bördel F) / All threadholes M 10x1 according to DIN 74235 Form FL (Flare F)
² SS für Edelstahl / SS for stainless steel